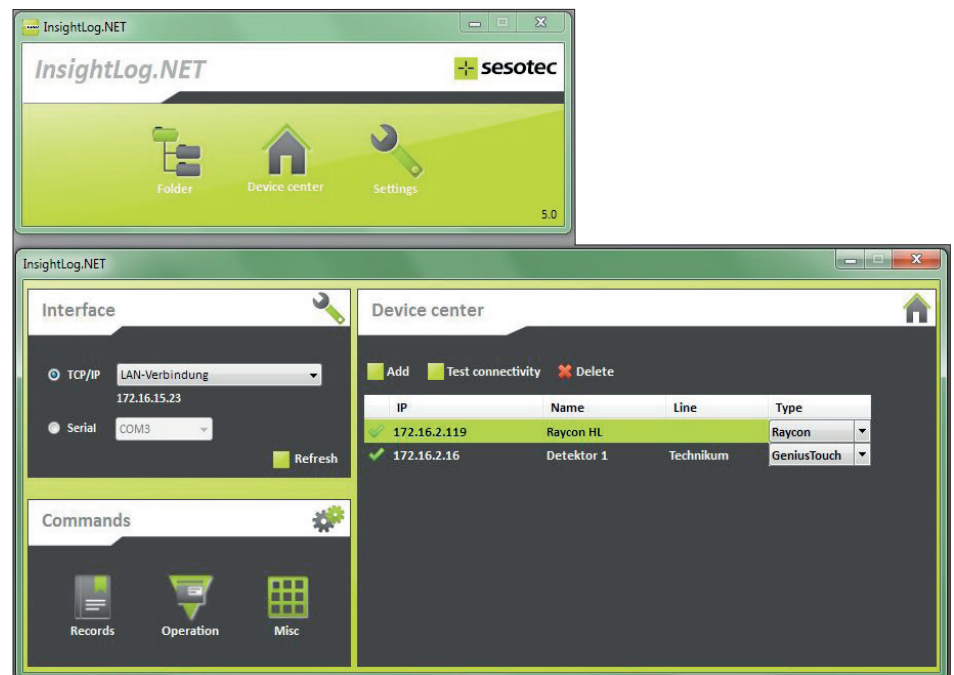


InsightLog.NET

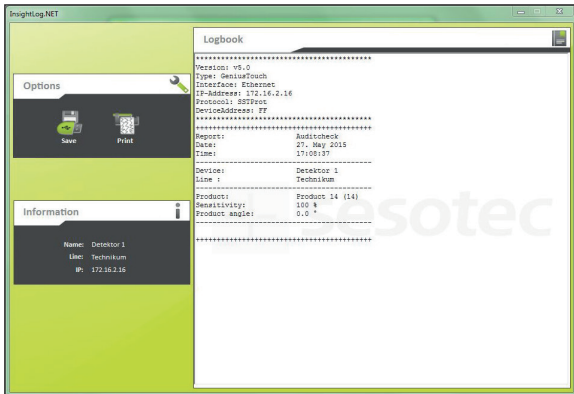
Central data management for Sesotec metal detectors and X-ray systems

- Suitable for all Sesotec metal detectors and separators with Control Unit SENSITY, GENIUS+ and GENIUS+ Touch controllers and all new RAYCON inspection systems
- Intuitive operation using a standard Windows® environment
- Read, save and print operating data (e.g. logbook, X-ray images, etc.)
- Multiple language capability (German, English, French, Czech and Dutch)

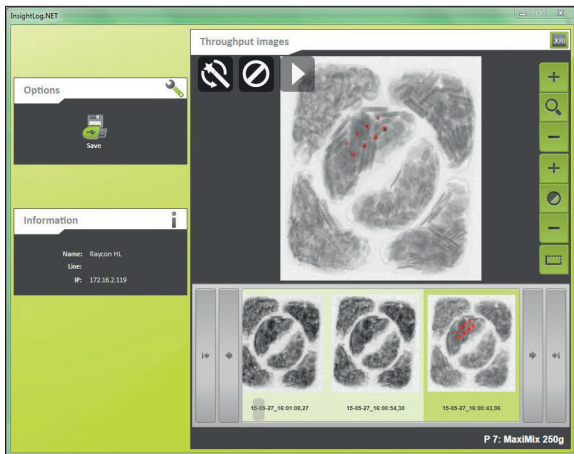


Main menu with an overview of all connected devices

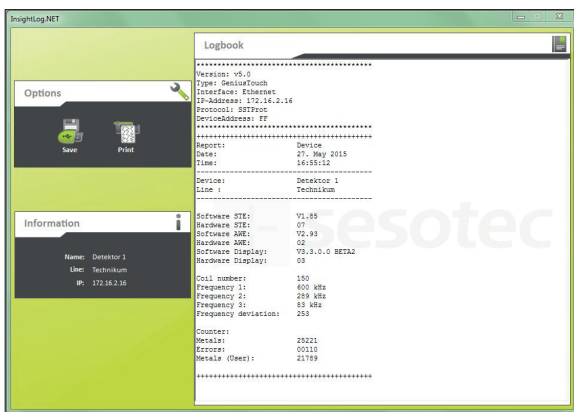
- Simple management of logbook datas
- Connection via serial interface (RS232 or RS485) or network (Ethernet or WLAN)
- Automatic detection of connected devices
- Protocols are displayed in the operating language selected on device
- Logbook content depends on device setting



GENIUS+ audit report with list of the test samples used and a User ID for the verification of HACCP conformity



Download from the stored ray images of good and rejected products on RAYCON inspection systems



GENIUS+ device report with clear representation of system data (products stored, adjustments, metal reports etc.)

Function:

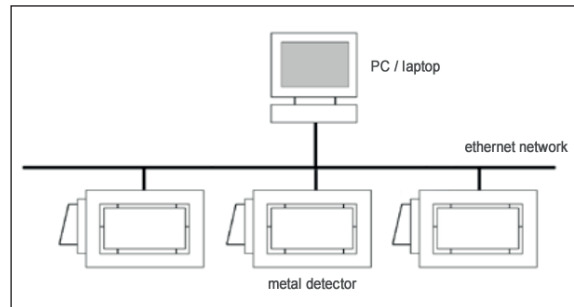
Sesotec metal detectors with SENSITY, GENIUS+ and GENIUS+ Touch control units and the RAYCON inspection systems record operational data such as detection of foreign object, product change, audit checks and error messages in a log. Each data entry is timed and dated and additionally all X-ray images are recorded by RAYCON inspection systems. Connection to a central PC or laptop is via a serial interface (RS232 or RS485) or in a network (Ethernet or WLAN). All logged data can be read, saved and printed out simply using InsightLog.NET.

All quality and process-relevant events are available to the quality management for further inspection and processing. Evaluating such operational data is an important component of HACCP processes. They are the basis for the monitoring of critical points in production and assist the traceability of events in foreign body detection.

System requirements:

A PC with the following features is required:

- Pentium 4 processor or higher with WINDOWS 7 (32 bit or 64 bit) and Net Framework 3.5
- Minimum 1 GB RAM
- Approx. 1.8 GB free hard drive space
- 10/100 Mbit/s network connection, RS232 or RS485 interface



Scope of delivery:

- InsightLog.NET data management software Version 5.0 on CD
- User manual
- Languages: German, English, France, Czech and Dutch

If you need more detailed information ask for our technical data sheet or a discussion with our experienced Sesotec Sales team.